



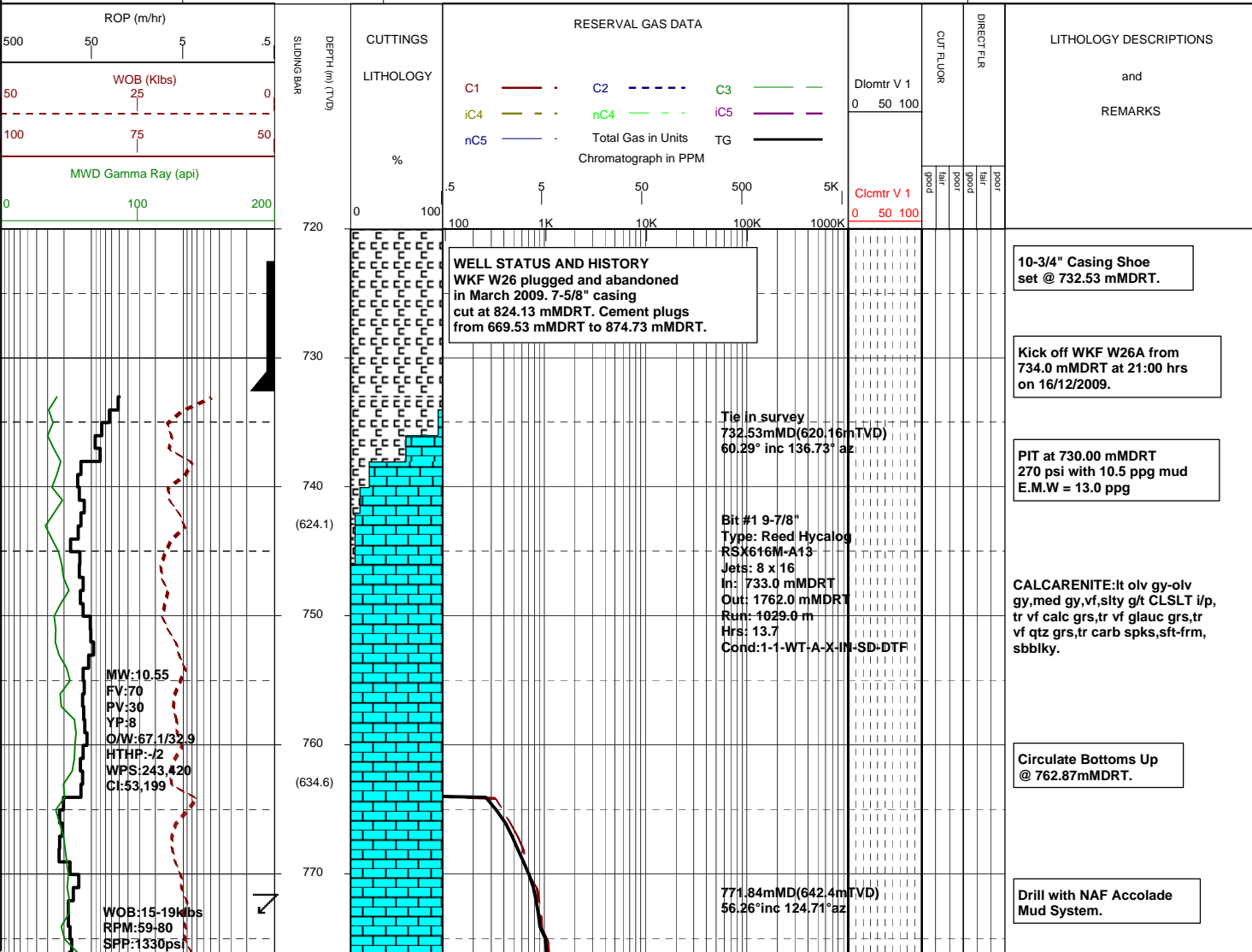
MASTERLOG

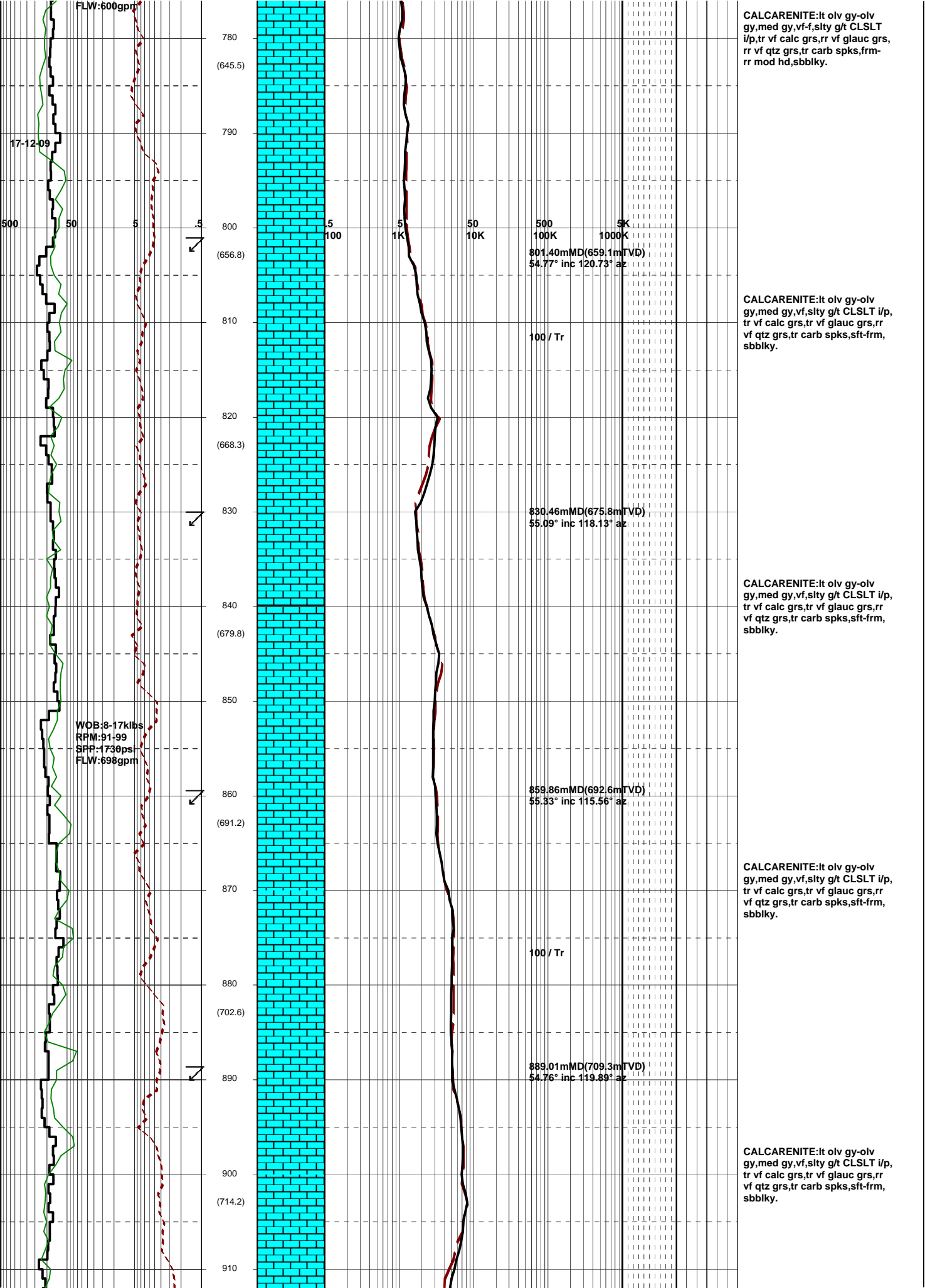
WKF W26A



| GENERAL | SURFACE POSITION | HOLE / CASING INFO | DATE / DEPTH | ENGINEERS |
|-------------------------|-------------------------------|-------------------------------------|---------------------------|-----------------|
| Country : AUSTRALIA | Longitude : 148°6'19.934" E | | Kick off Date: 17/12/2009 | Alex Djukanovic |
| Permit : VIC / L5 | Latitude : 38°35'34.849" S | 9-7/8" Hole to | Total Depth Date: | Mark Smith |
| Field : Kingfish | MGA Co-ord X : 596277.742 mE | | Total Depth: | Gareth Munro |
| Basin : GIPPSLAND | MGA Co-ord Y : 5727806.123 mN | 10-3/4" Surface Csg at 732.53 mMDRT | True Vertical Depth: | Kepa O'Reilly |
| Well Type : DEVELOPMENT | RT to MSL : 41.70 m | | Log Scale : 1/500 | Adam Sullivan |
| Rig Name : Nabors 175 | RT to Sea Bed : 118.70 m | | | |

| ABBREVIATIONS | | LITHOLOGY LEGEND | | | | ENGINEERING LEGEND | |
|---------------|--------------------|------------------|----------------------|--------------|--------------|--------------------|------------|
| MW | Mud Weight | WOB | Weight on Bit (klbs) | Claystone | Marl | Bryozoa | Glauconite |
| FV | Funnel Viscosity | RPM | Rotations Per Min | Siltstone | Limestone | Radiolariae | Pyrite |
| PV | Plastic Viscosity | FLW | Flow Rate (gpm) | Sandstone | Dolomite | Echinoids | |
| YP | Yield Point | SPP | Pump Pressure (psi) | Shale | Coal-lignite | Foraminiferae | |
| O/W | Oil/Water Ratio | RR | Re-Run Bit | Conglomerate | Volcanics | Cement | |
| WPS | Aq. Phase Salinity | TG | Trip Gas | | | | |
| HPHT | Fluid Loss | CG | Connection Gas | | | | |
| CI | Chlorides | BG | Background Gas | | | | |
| Incl | Inclination | DGP | Drilled Gas Peak | | | | |
| Az | Azimuth | MM | Mud Motor | | | | |

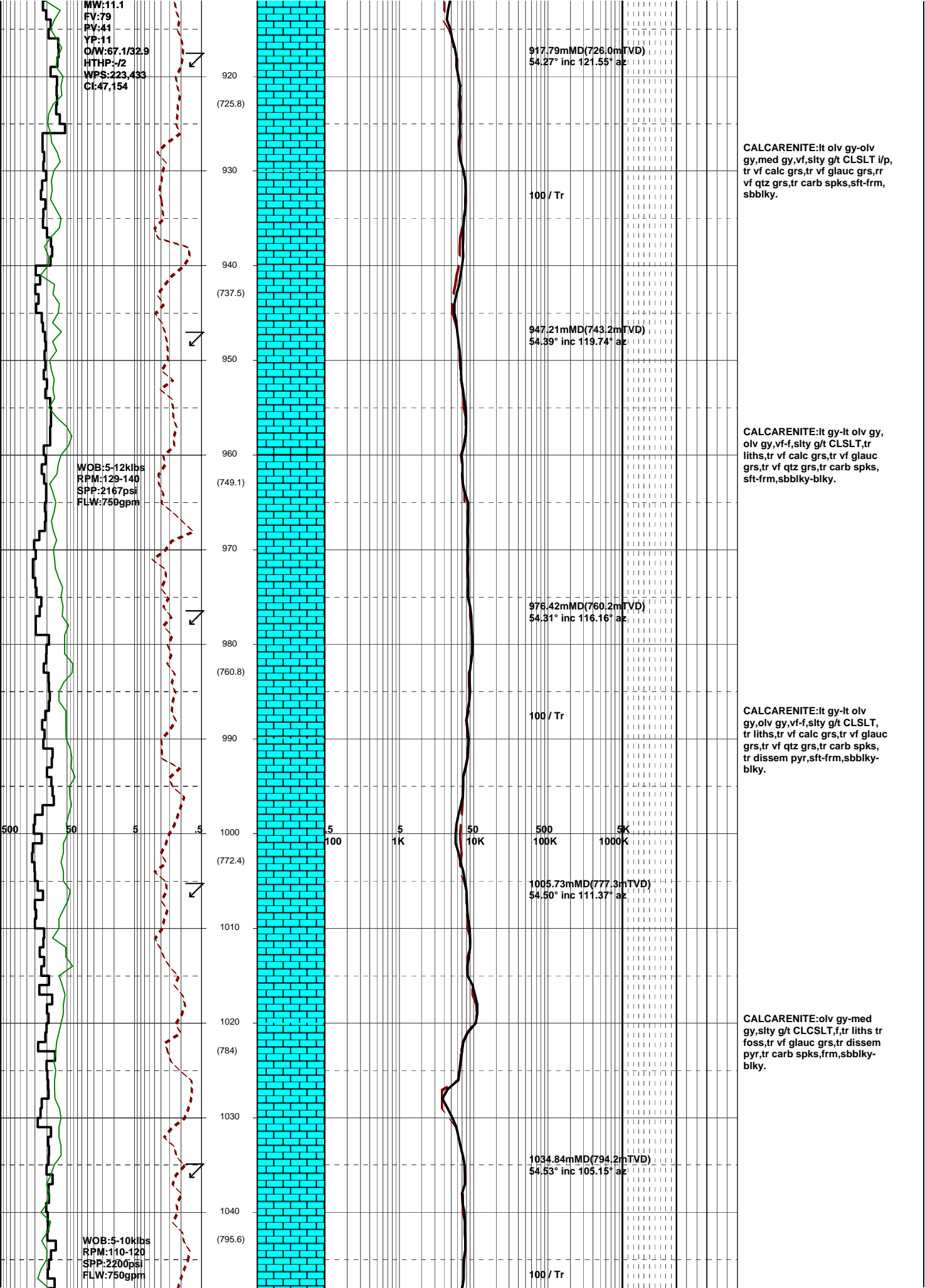


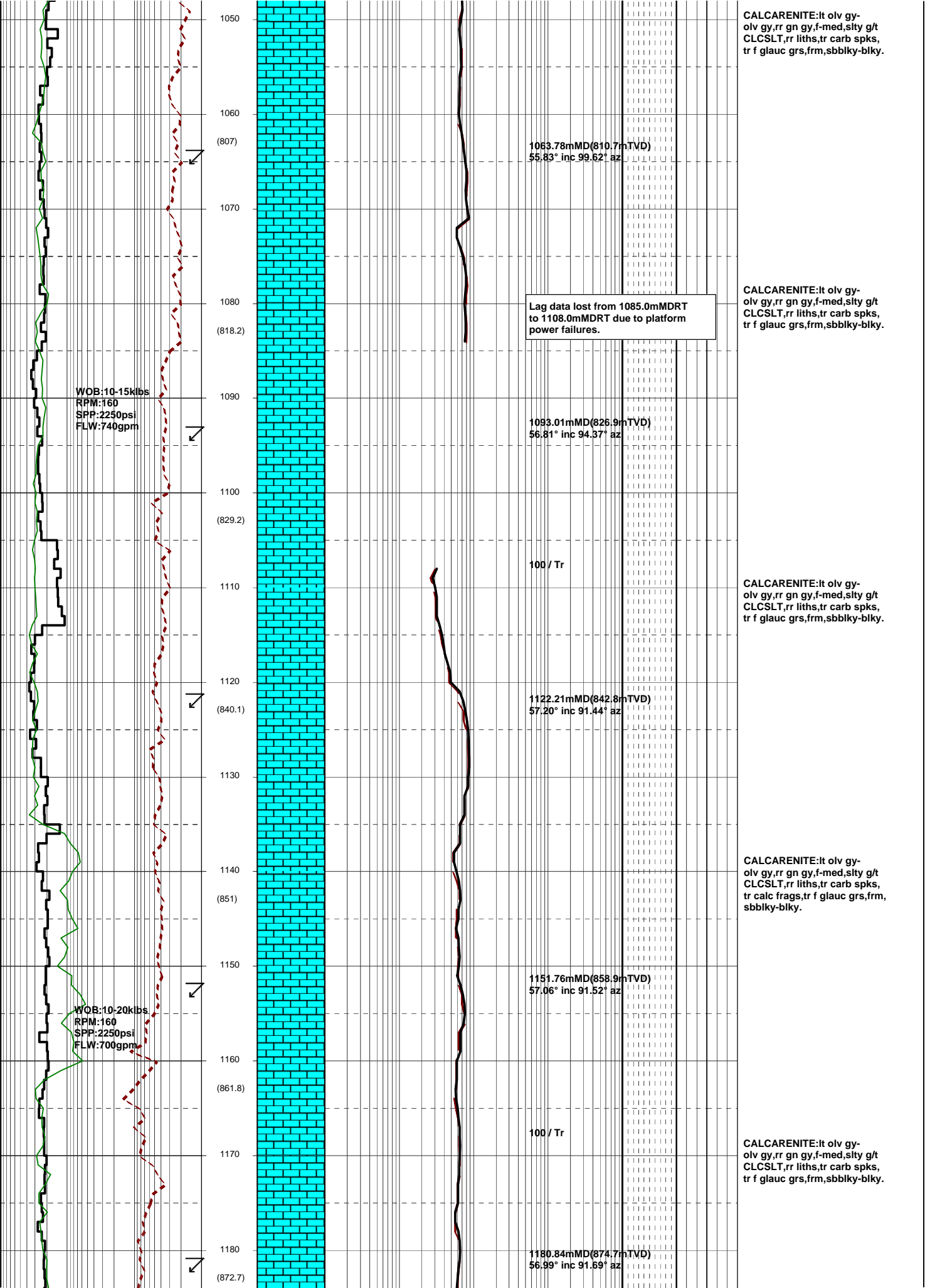


MW:11.1
FV:79
PV:41
YP:11
O/W:67.1/32.9
HTHP:-/2
WPS:223,433
Ct:47,154

WOB:5-12klbs
RPM:129-140
SPP:2167psi
FLW:750gpm

WOB:5-10klbs
RPM:110-120
SPP:2200psi
FLW:750gpm





1050
1060
(807)
1070
1080
(818.2)
1090
(829.2)
1100
(829.2)
1110
1120
(840.1)
1130
1140
(851)
1150
1160
(861.8)
1170
1180
(872.7)

WOB: 10-15k lbs
RPM: 160
SPP: 2250 psi
FLW: 740 gpm

WOB: 10-20k lbs
RPM: 160
SPP: 2250 psi
FLW: 700 gpm

1063.78mMD(810.7mTVD)
55.83° inc 99.62° az

Lag data lost from 1085.0mMDRT
to 1108.0mMDRT due to platform
power failures.

1093.01mMD(826.9mTVD)
56.81° inc 94.37° az

100 / Tr

1122.21mMD(842.8mTVD)
57.20° inc 91.44° az

1151.76mMD(858.9mTVD)
57.06° inc 91.52° az

100 / Tr

1180.84mMD(874.7mTVD)
56.99° inc 91.69° az

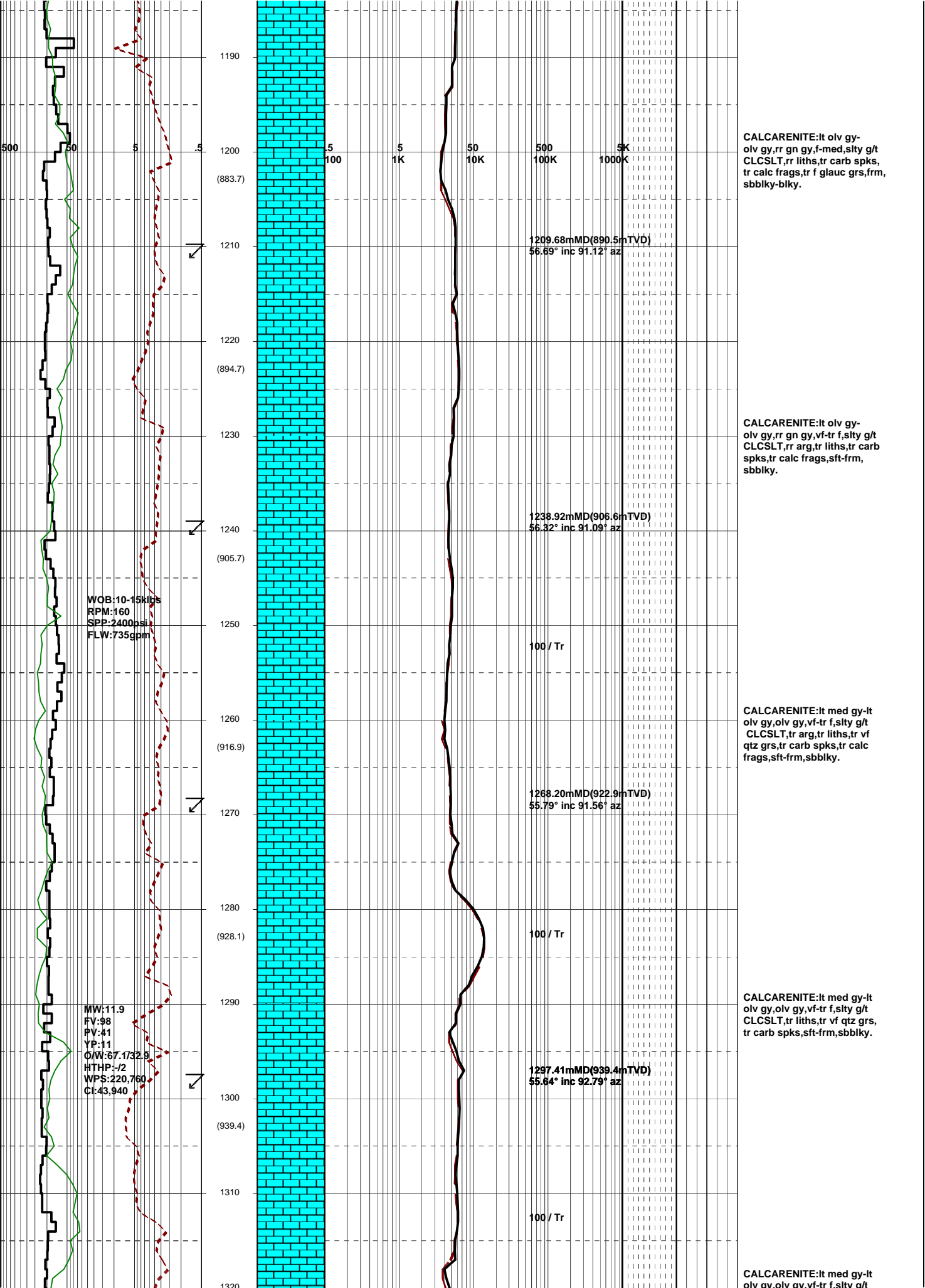
CALCARENITE:lt olv gy-
olv gy,rr gn gy,f-med,slty g/t
CLCSLT,rr liths,tr carb spks,
tr f glauc grs,frm,sbbiky-blky.

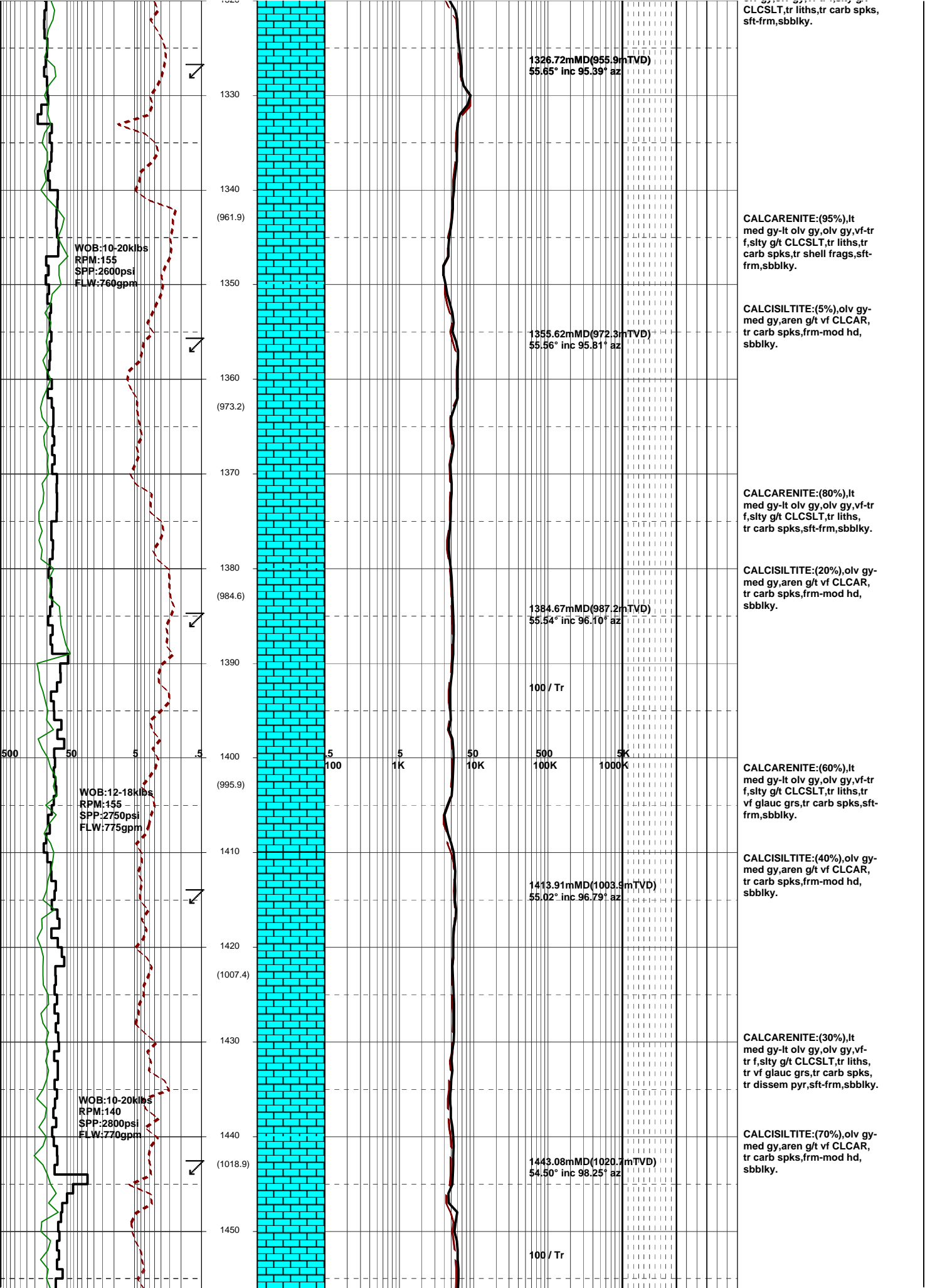
CALCARENITE:lt olv gy-
olv gy,rr gn gy,f-med,slty g/t
CLCSLT,rr liths,tr carb spks,
tr f glauc grs,frm,sbbiky-blky.

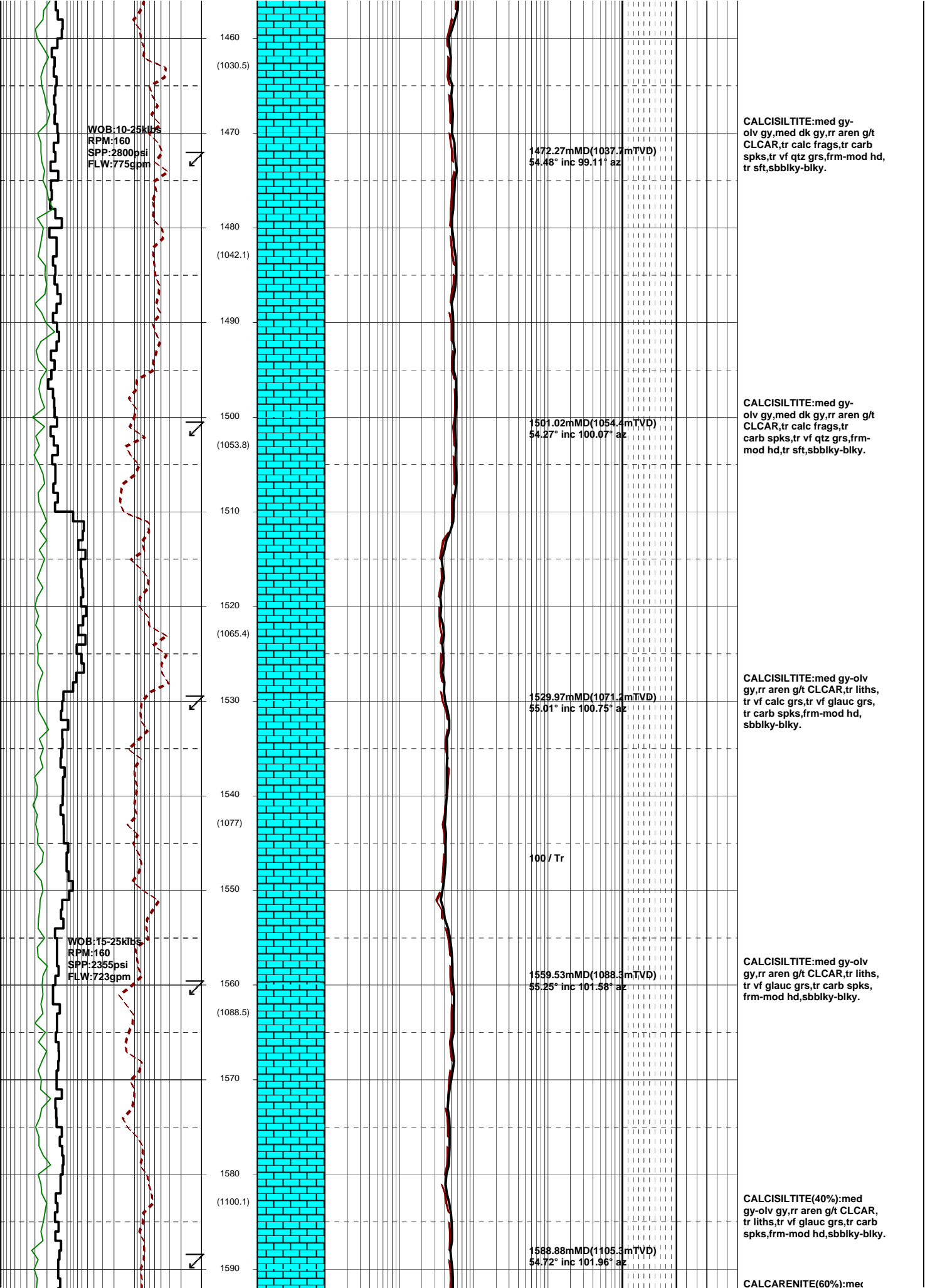
CALCARENITE:lt olv gy-
olv gy,rr gn gy,f-med,slty g/t
CLCSLT,rr liths,tr carb spks,
tr f glauc grs,frm,sbbiky-blky.

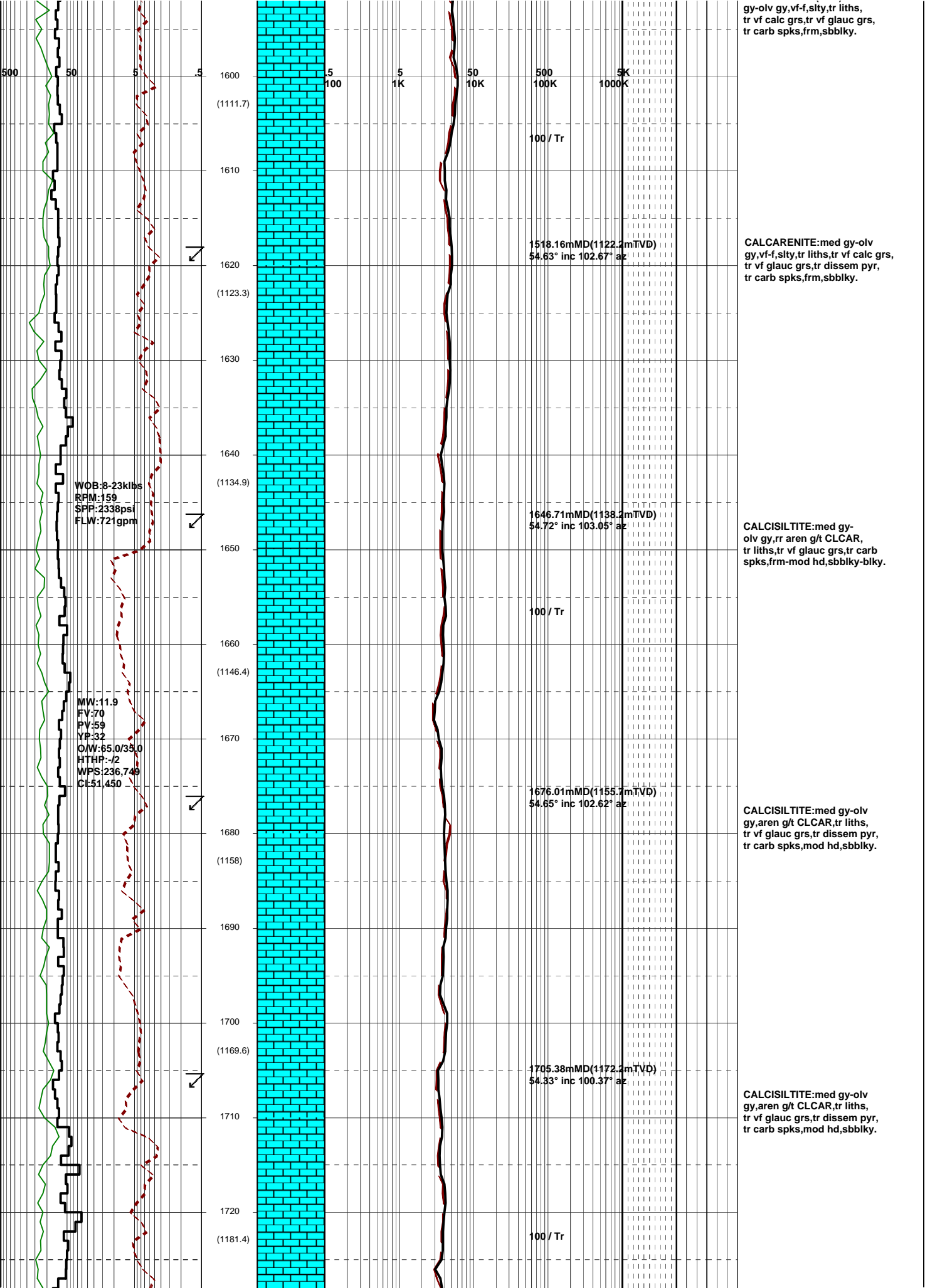
CALCARENITE:lt olv gy-
olv gy,rr gn gy,f-med,slty g/t
CLCSLT,rr liths,tr carb spks,
tr calc frags,tr f glauc grs,frm,
sbbiky-blky.

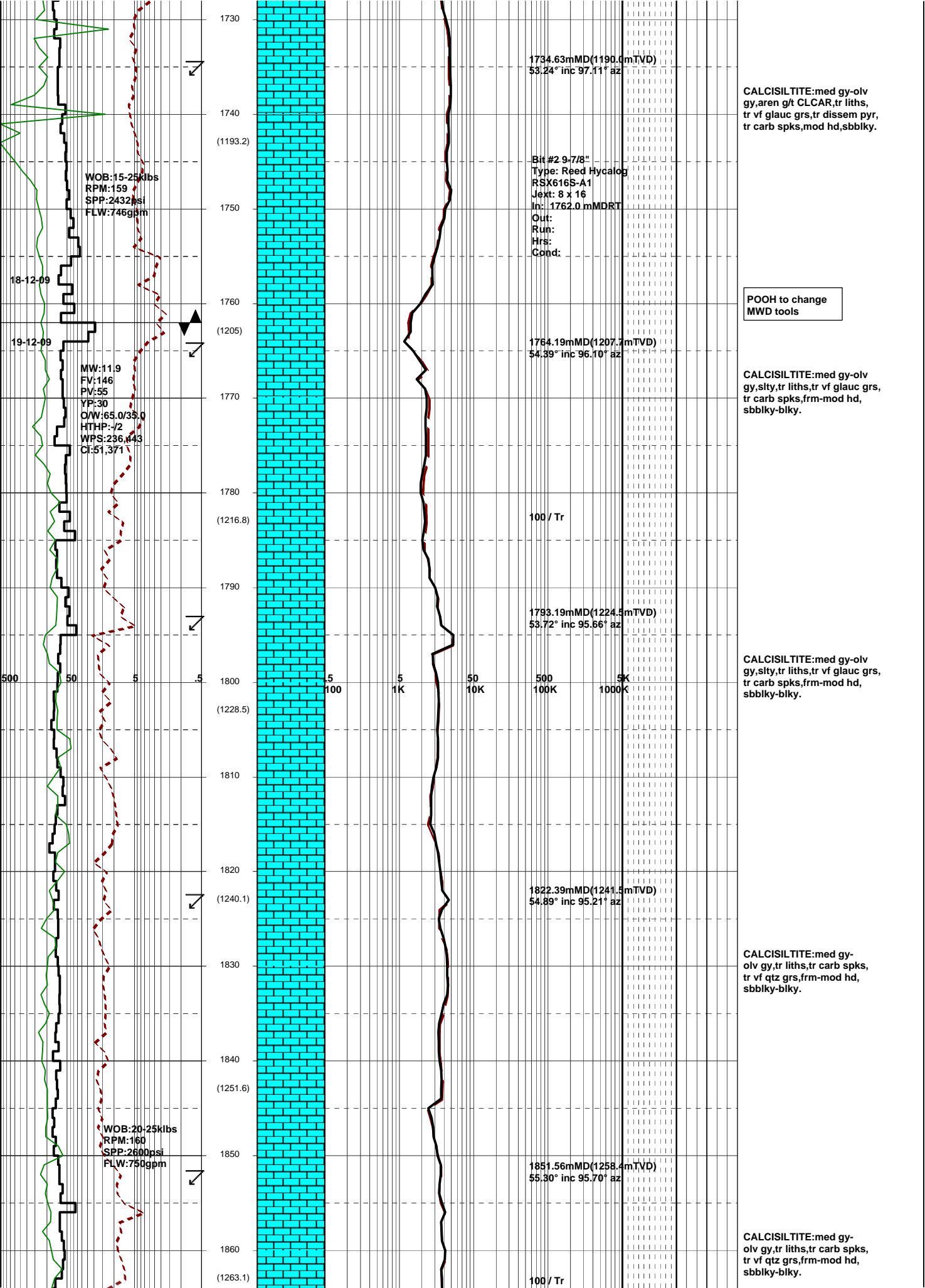
CALCARENITE:lt olv gy-
olv gy,rr gn gy,f-med,slty g/t
CLCSLT,rr liths,tr carb spks,
tr f glauc grs,frm,sbbiky-blky.

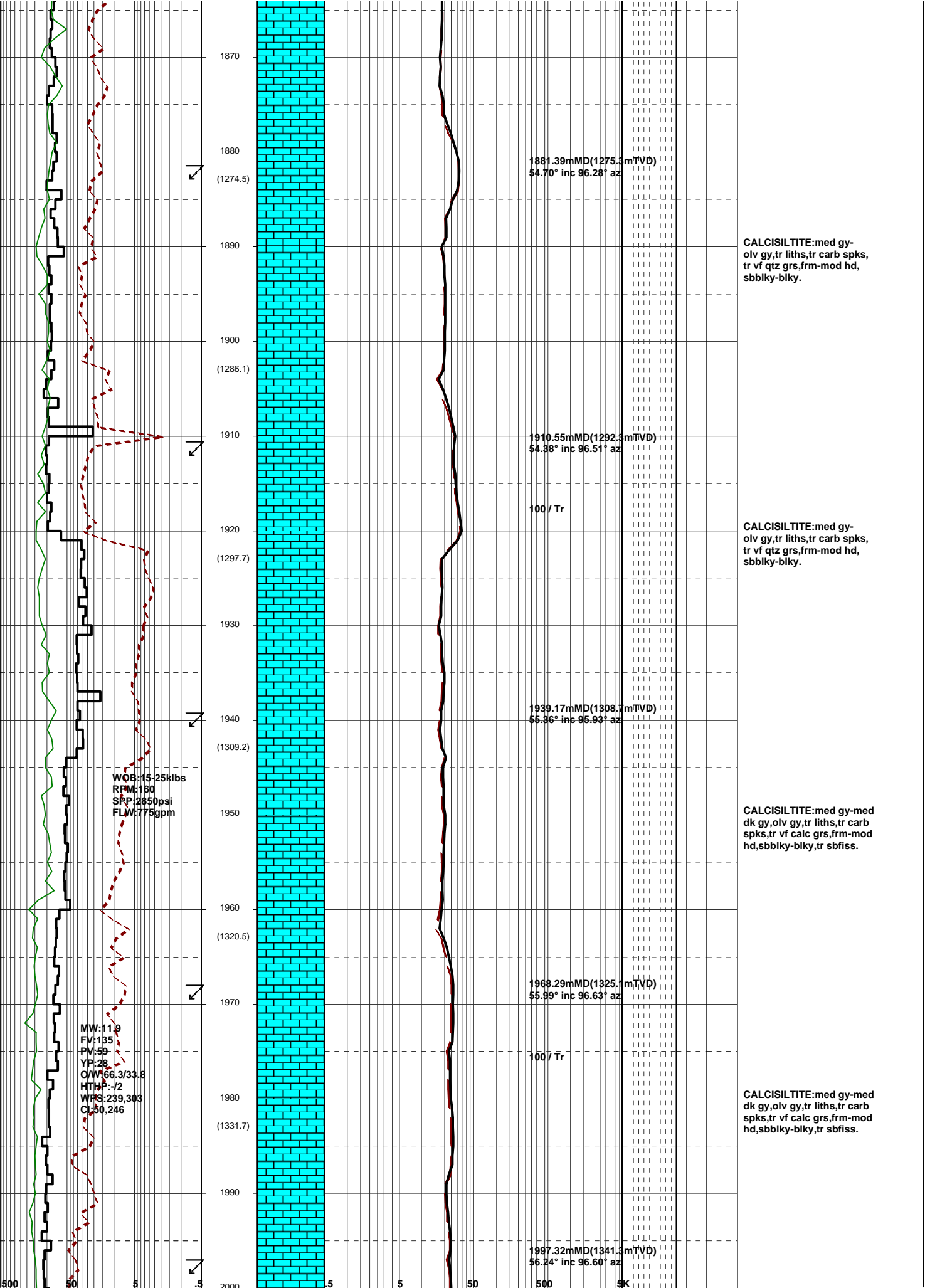


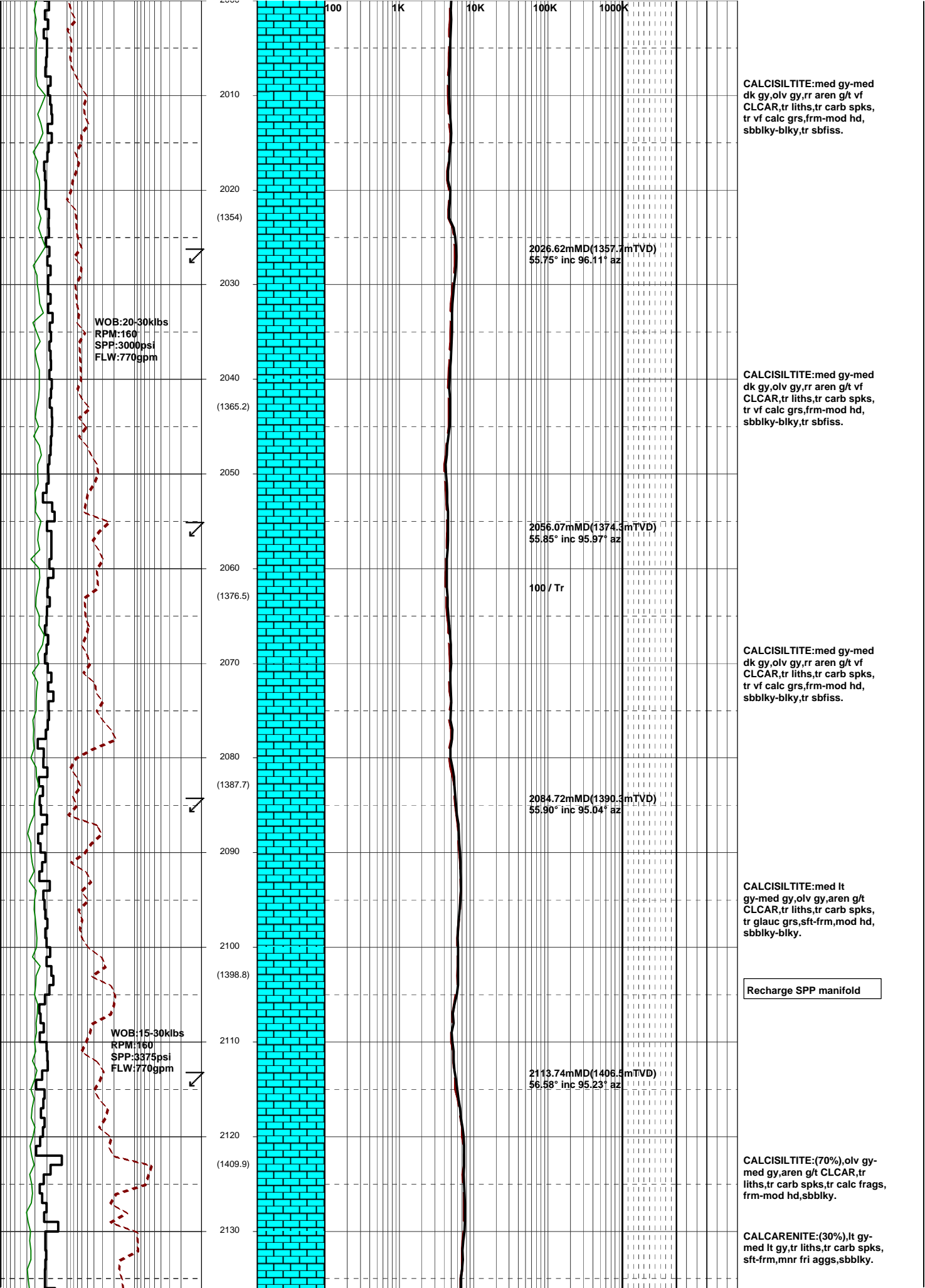


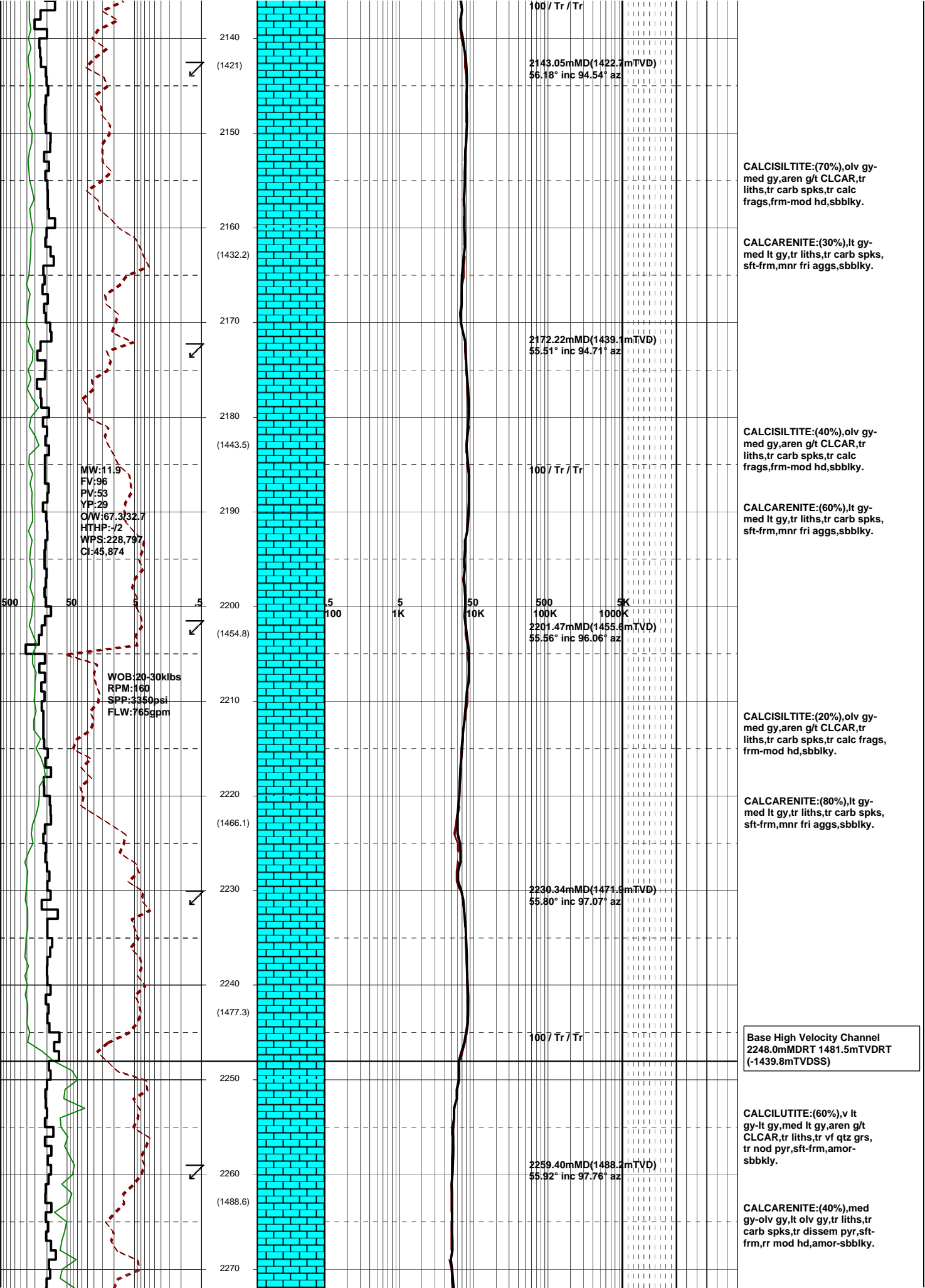


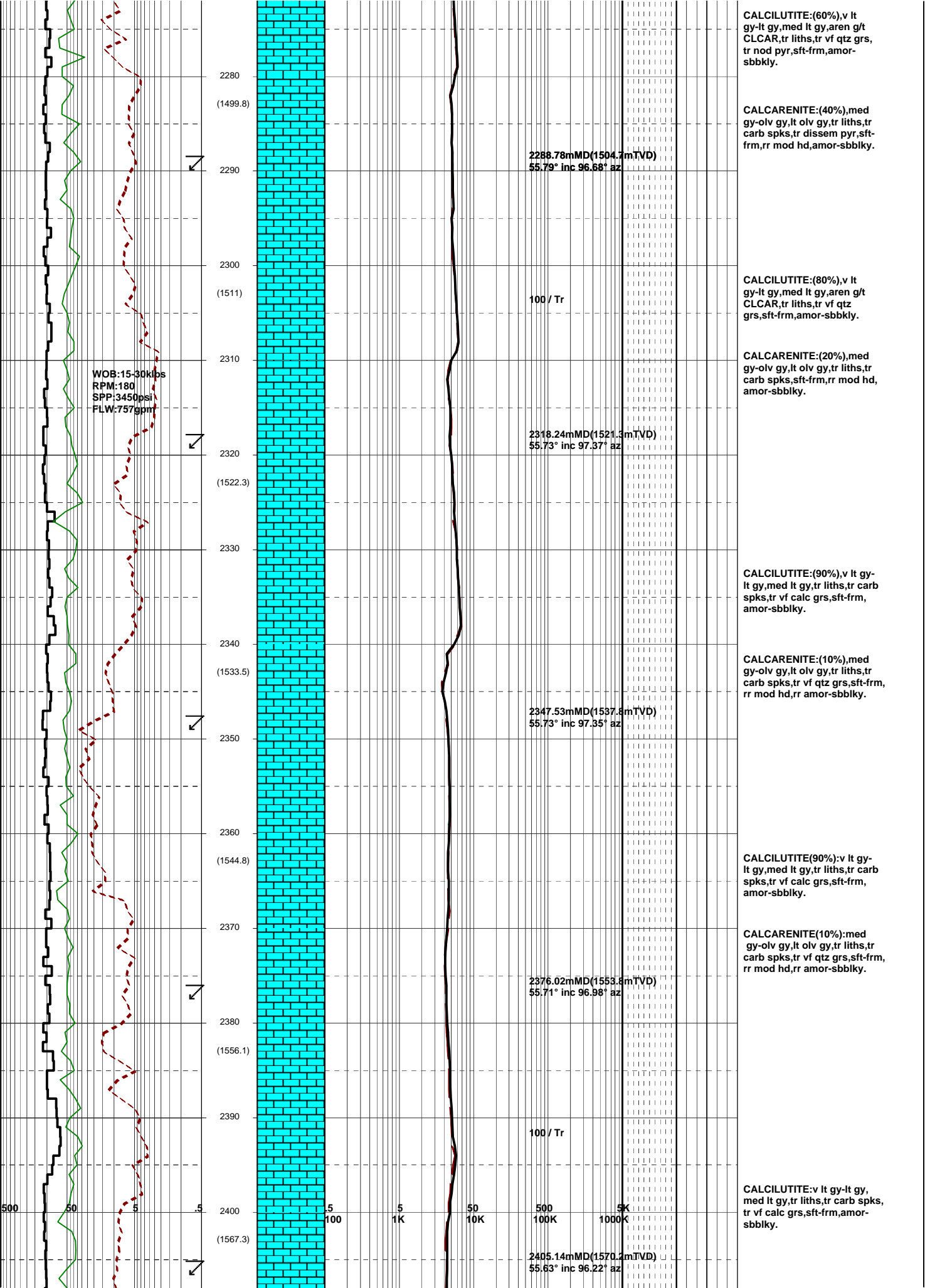


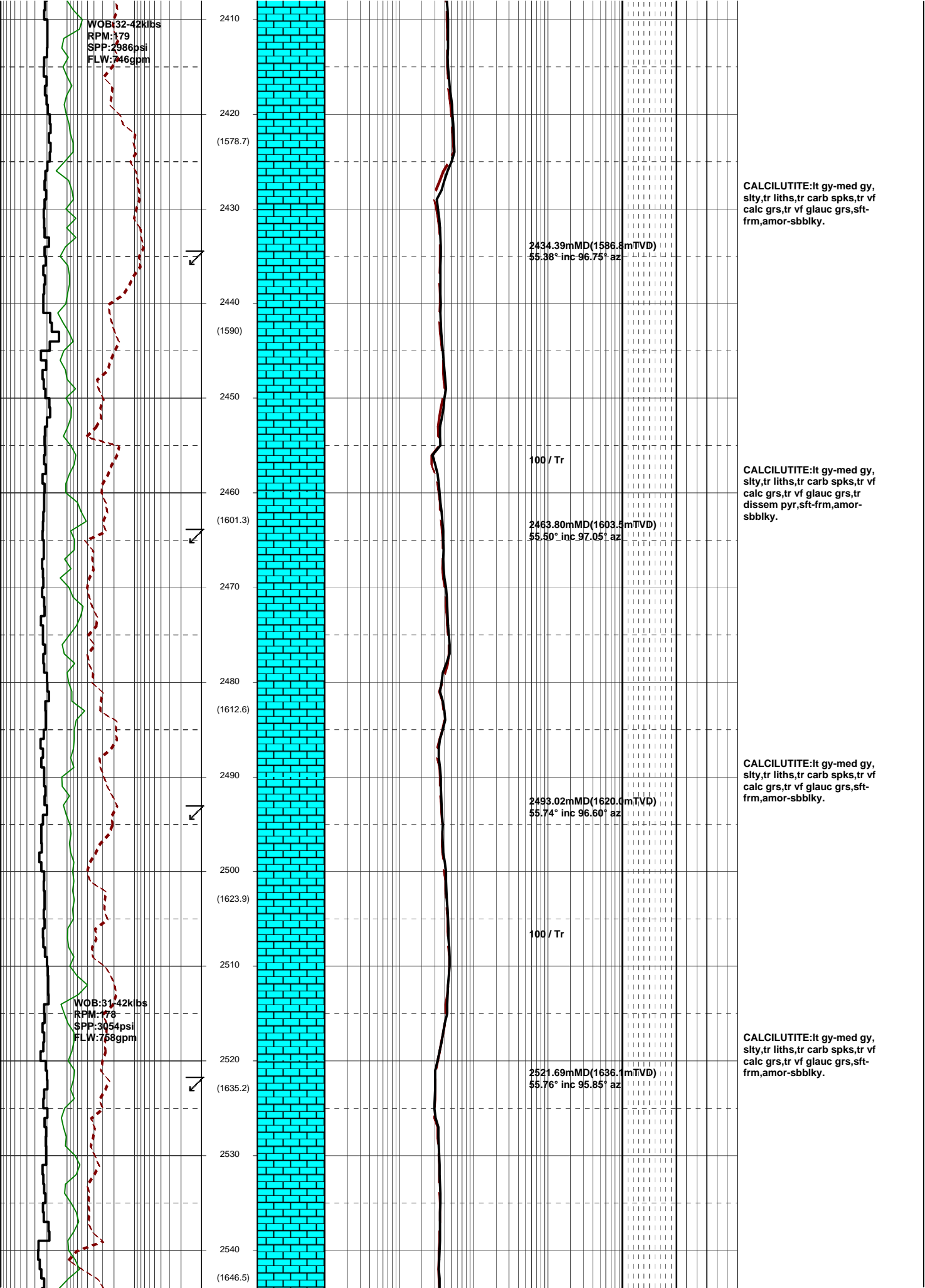


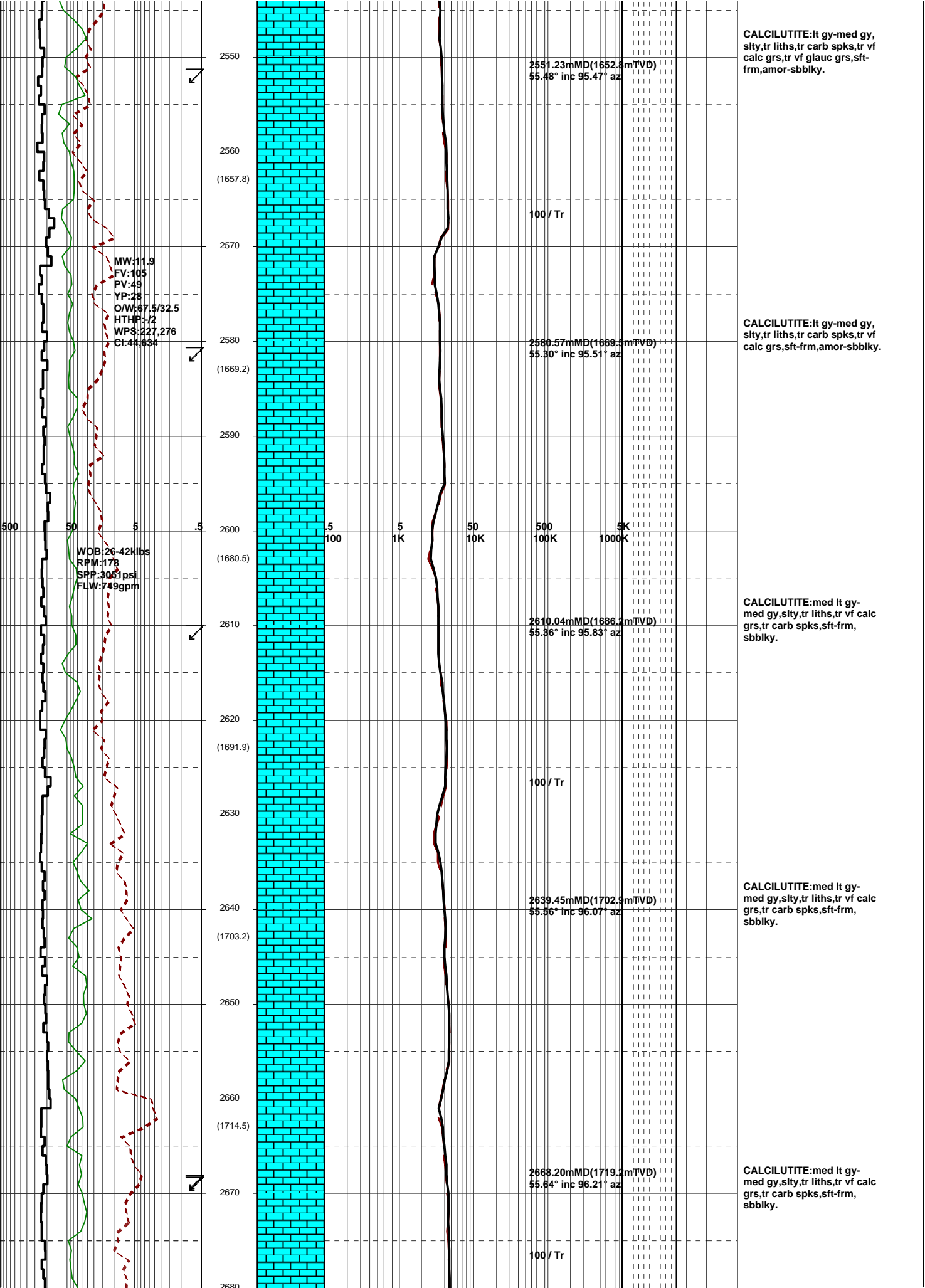


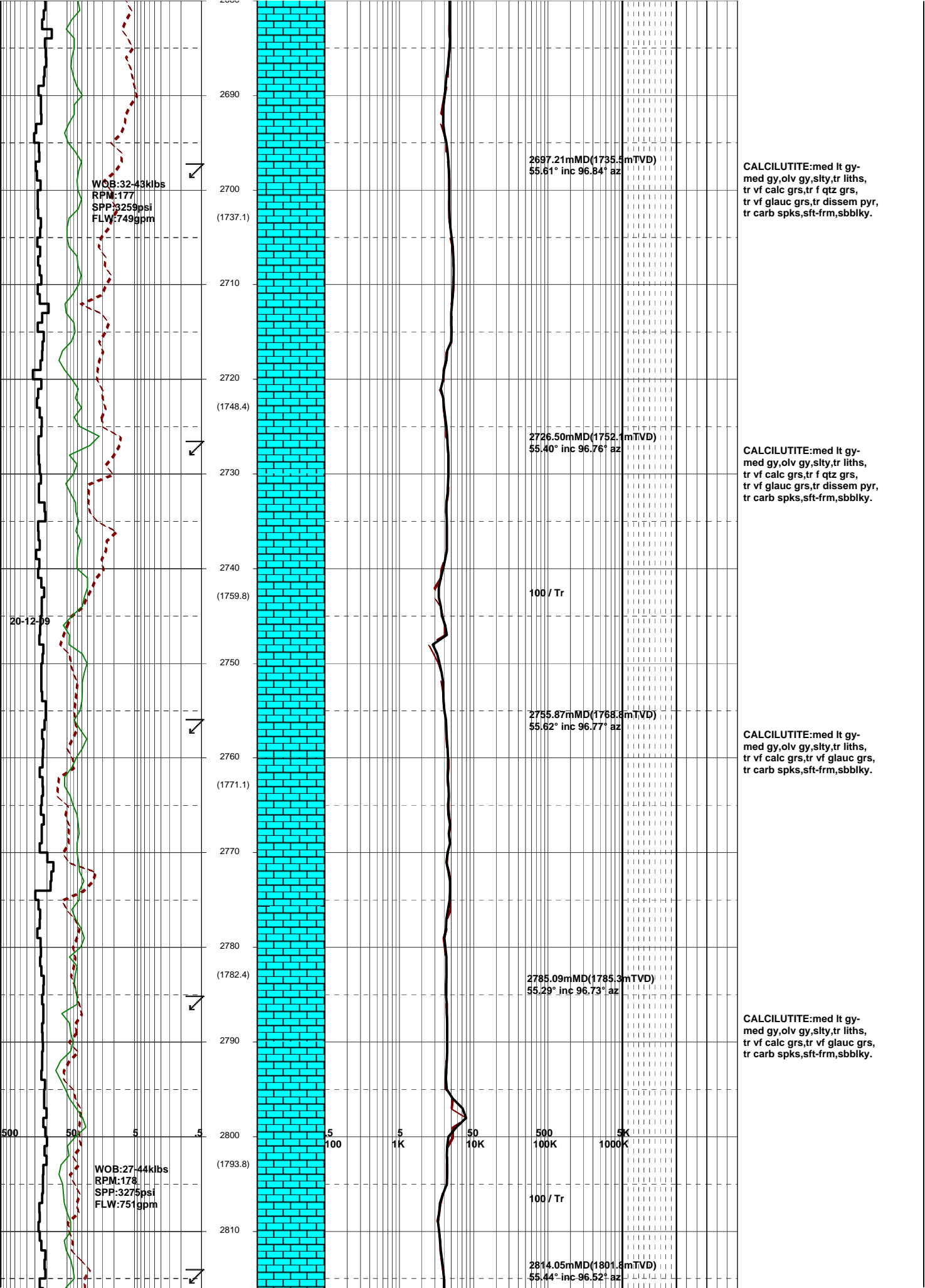


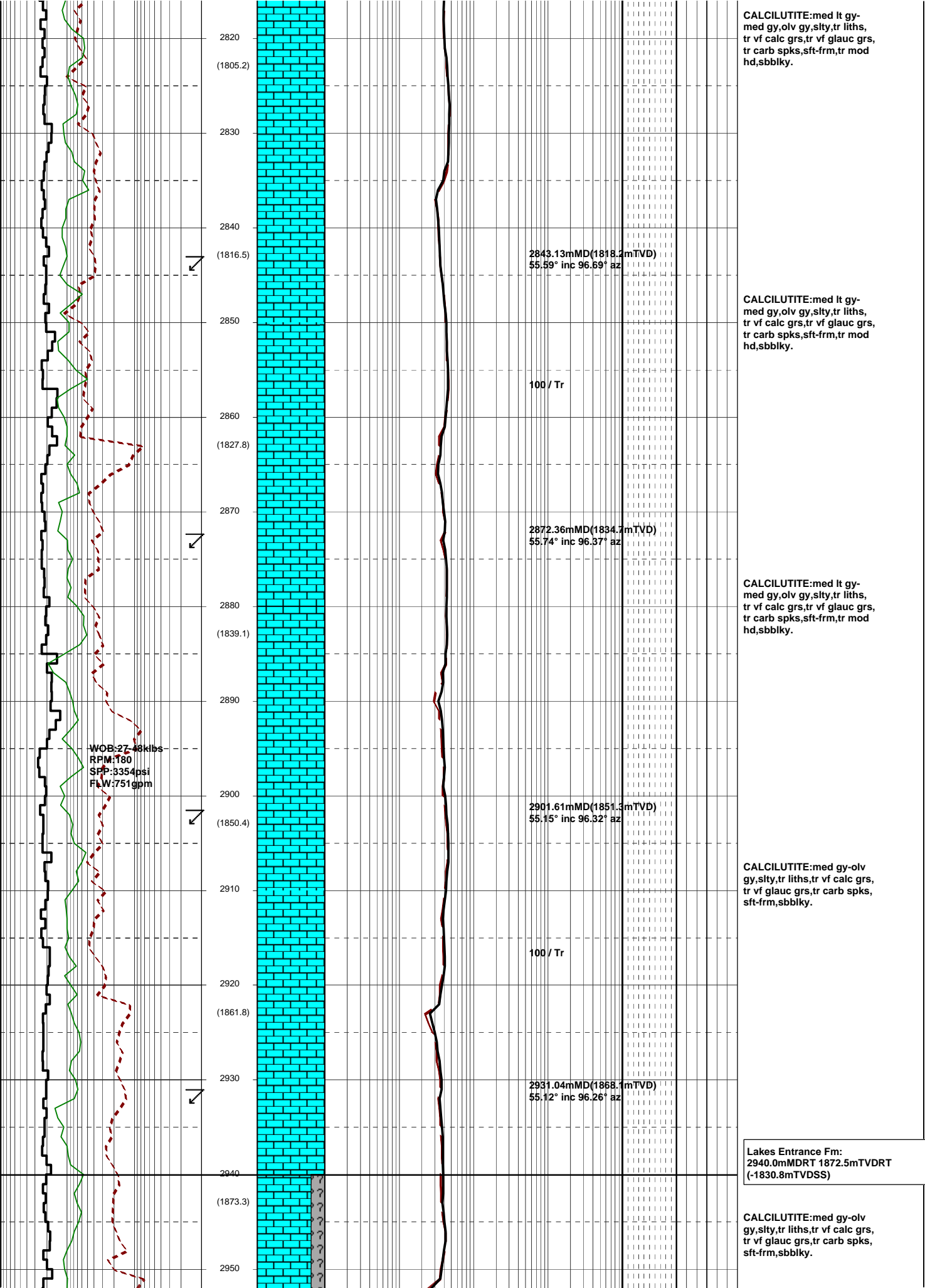












2820
(1805.2)
2830
2840
(1816.5)
2850
2860
(1827.8)
2870
2880
(1839.1)
2890
2900
(1850.4)
2910
2920
(1861.8)
2930
2940
(1873.3)
2950

WOB: 27.48klbs
RPM: 180
SFP: 3354psi
FLW: 751gpm

2843.13mMD(1818.2mTVD)
55.59° inc 96.69° az

100 / Tr

2872.36mMD(1834.7mTVD)
55.74° inc 96.37° az

2901.61mMD(1851.3mTVD)
55.15° inc 96.32° az

100 / Tr

2931.04mMD(1868.1mTVD)
55.12° inc 96.26° az

CALCILUTITE: med lt gy-
med gy, olv gy, slty, tr liths,
tr vf calc grs, tr vf glauc grs,
tr carb spks, sft-frm, tr mod
hd, sbbkly.

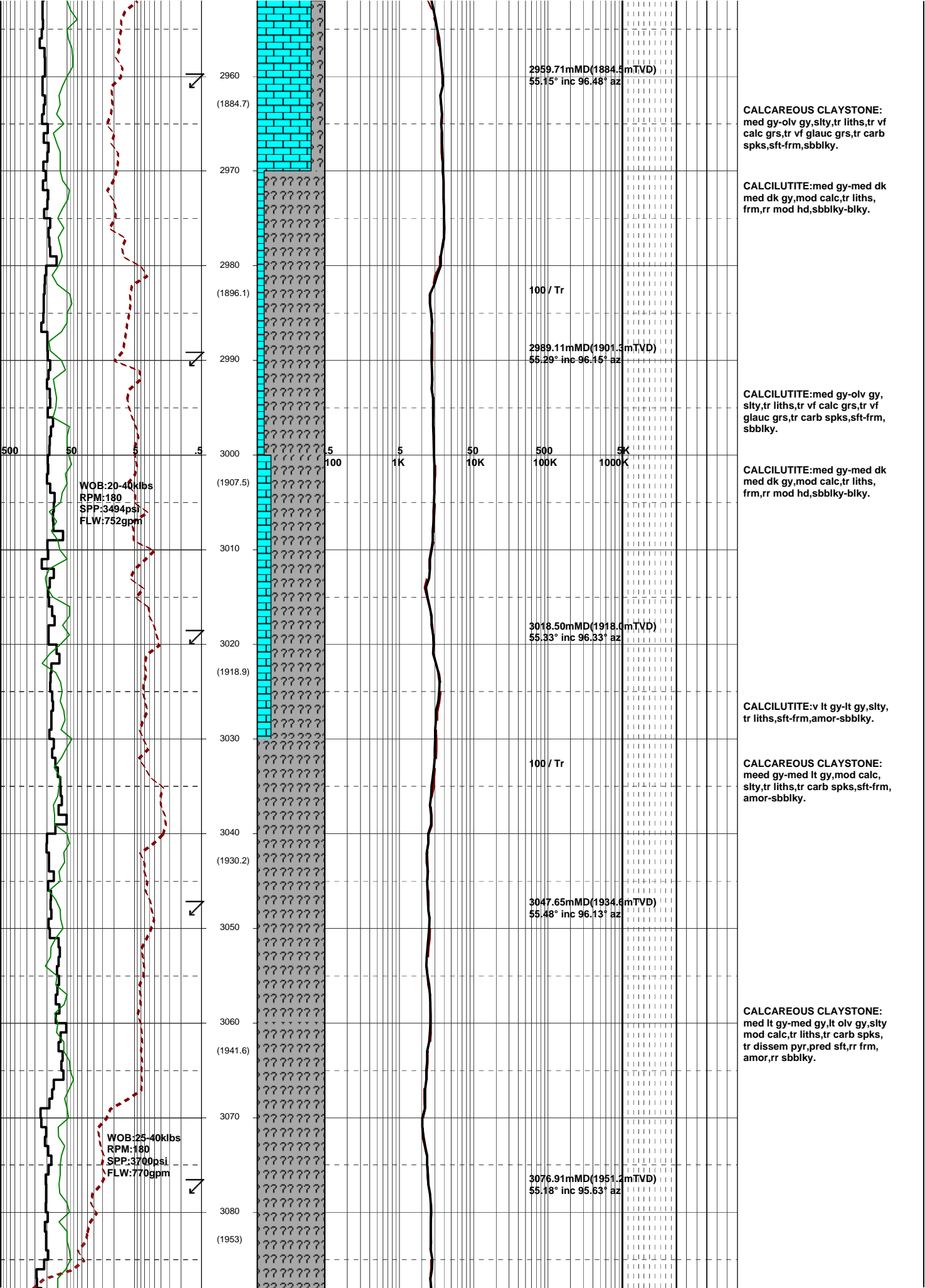
CALCILUTITE: med lt gy-
med gy, olv gy, slty, tr liths,
tr vf calc grs, tr vf glauc grs,
tr carb spks, sft-frm, tr mod
hd, sbbkly.

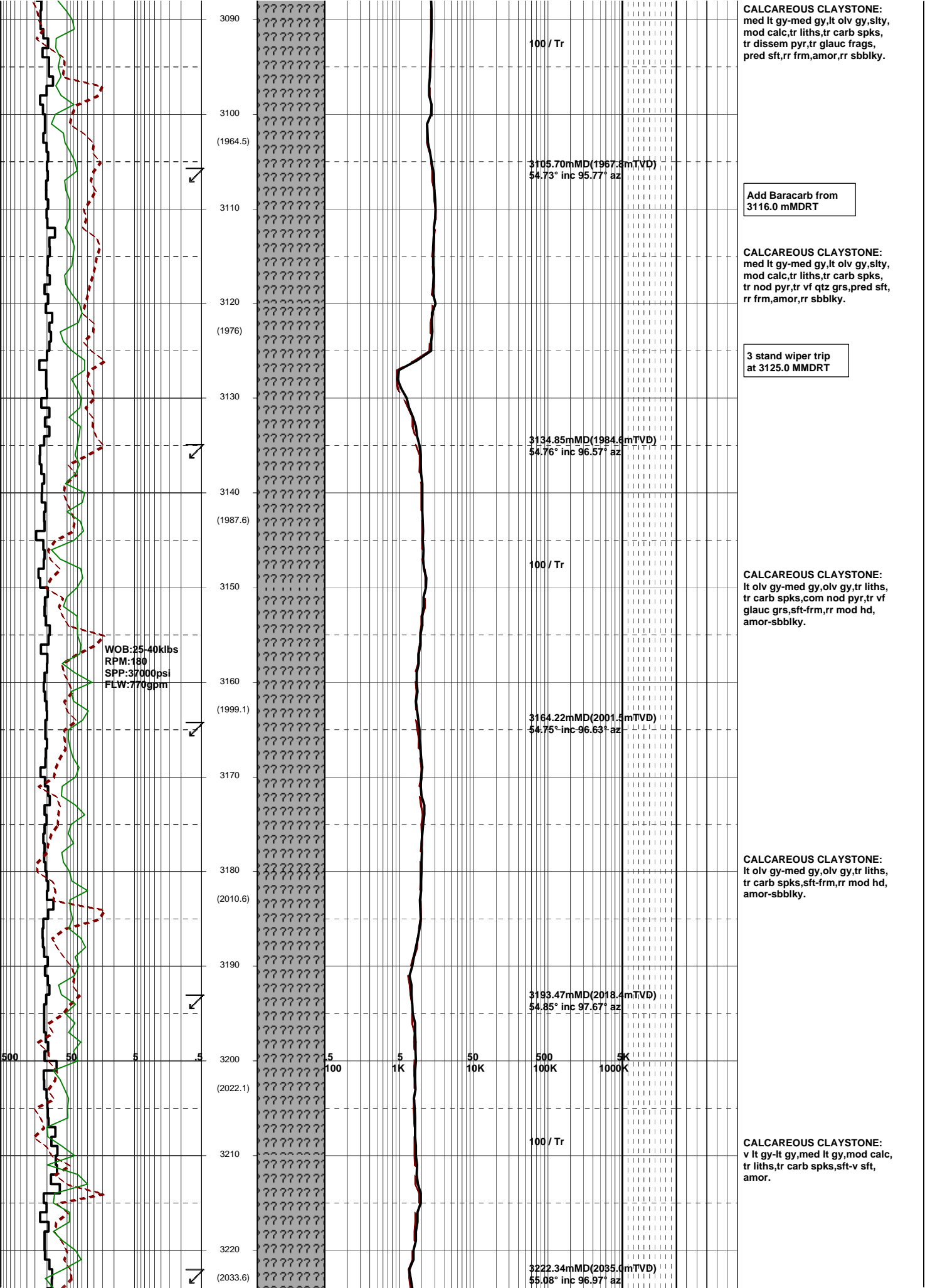
CALCILUTITE: med lt gy-
med gy, olv gy, slty, tr liths,
tr vf calc grs, tr vf glauc grs,
tr carb spks, sft-frm, tr mod
hd, sbbkly.

CALCILUTITE: med gy-olv
gy, slty, tr liths, tr vf calc grs,
tr vf glauc grs, tr carb spks,
sft-frm, sbbkly.

Lakes Entrance Fm:
2940.0mMDRT 1872.5mTVDRT
(-1830.8mTVDSS)

CALCILUTITE: med gy-olv
gy, slty, tr liths, tr vf calc grs,
tr vf glauc grs, tr carb spks,
sft-frm, sbbkly.





3090
3100
(1964.5)
3110
3120
(1976)
3130
3140
(1987.6)
3150
3160
(1999.1)
3170
3180
(2010.6)
3190
3200
(2022.1)
3210
3220
(2033.6)

100 / Tr

3105.70mMD(1967.8mTVD)
54.73° inc 95.77° az

Add Baracarb from
3116.0 mMDRT

CALCAREOUS CLAYSTONE:
med lt gy-med gy,lt olv gy,silty,
mod calc,tr liths,tr carb spks,
tr nod pyr,tr vf qtz grs,pred sft,
rr frm,amor,rr sbblky.

3 stand wiper trip
at 3125.0 MMDRT

3134.85mMD(1984.6mTVD)
54.76° inc 96.57° az

100 / Tr

CALCAREOUS CLAYSTONE:
lt olv gy-med gy,olv gy,tr liths,
tr carb spks,com nod pyr,tr vf
glauc grs,sft-frm,rr mod hd,
amor-sbblky.

WOB:25-40klbs
RPM:180
SPP:37000psi
FLW:770gpm

3164.22mMD(2001.5mTVD)
54.75° inc 96.63° az

CALCAREOUS CLAYSTONE:
lt olv gy-med gy,olv gy,tr liths,
tr carb spks,sft-frm,rr mod hd,
amor-sbblky.

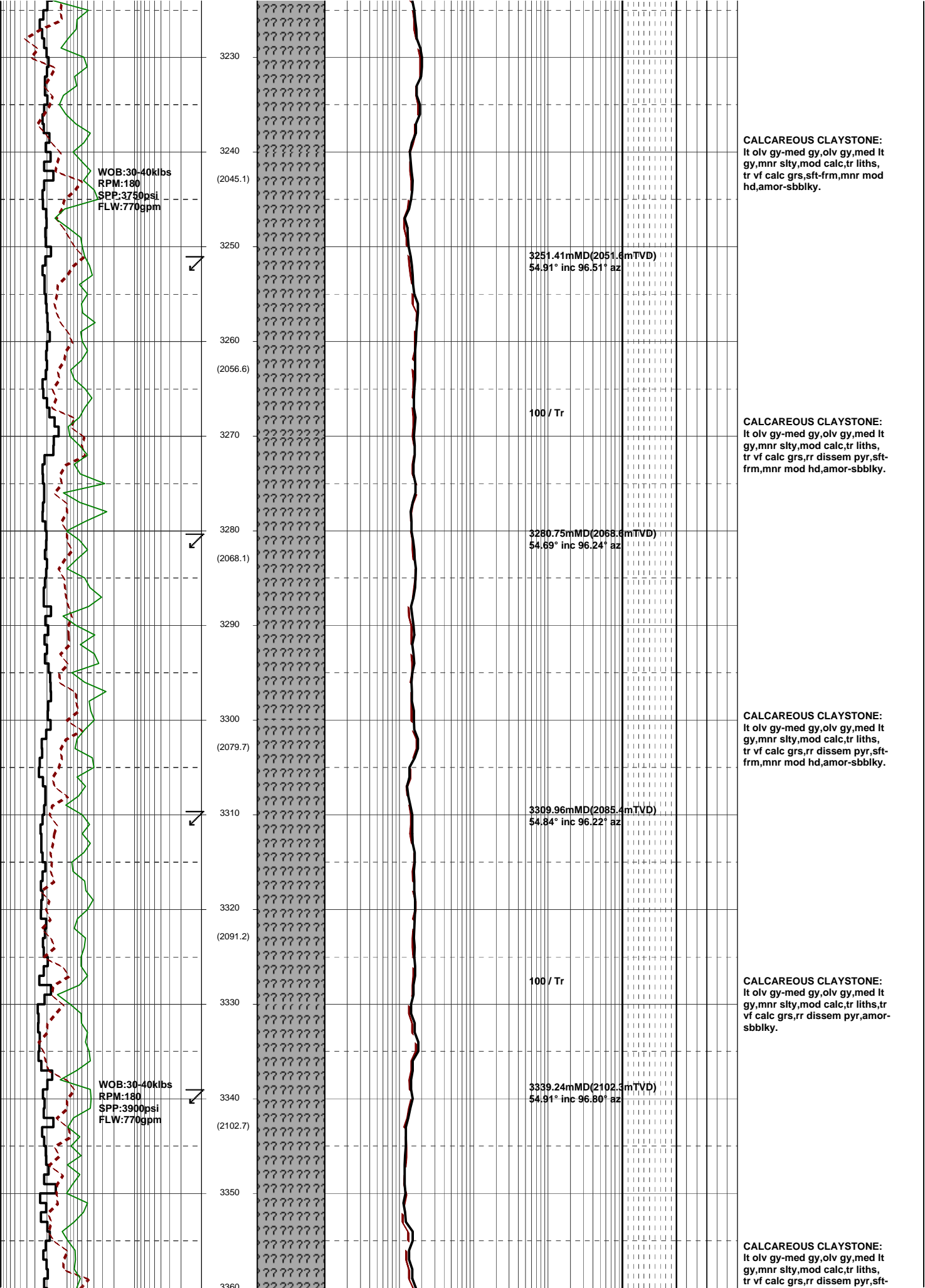
3193.47mMD(2018.4mTVD)
54.85° inc 97.67° az

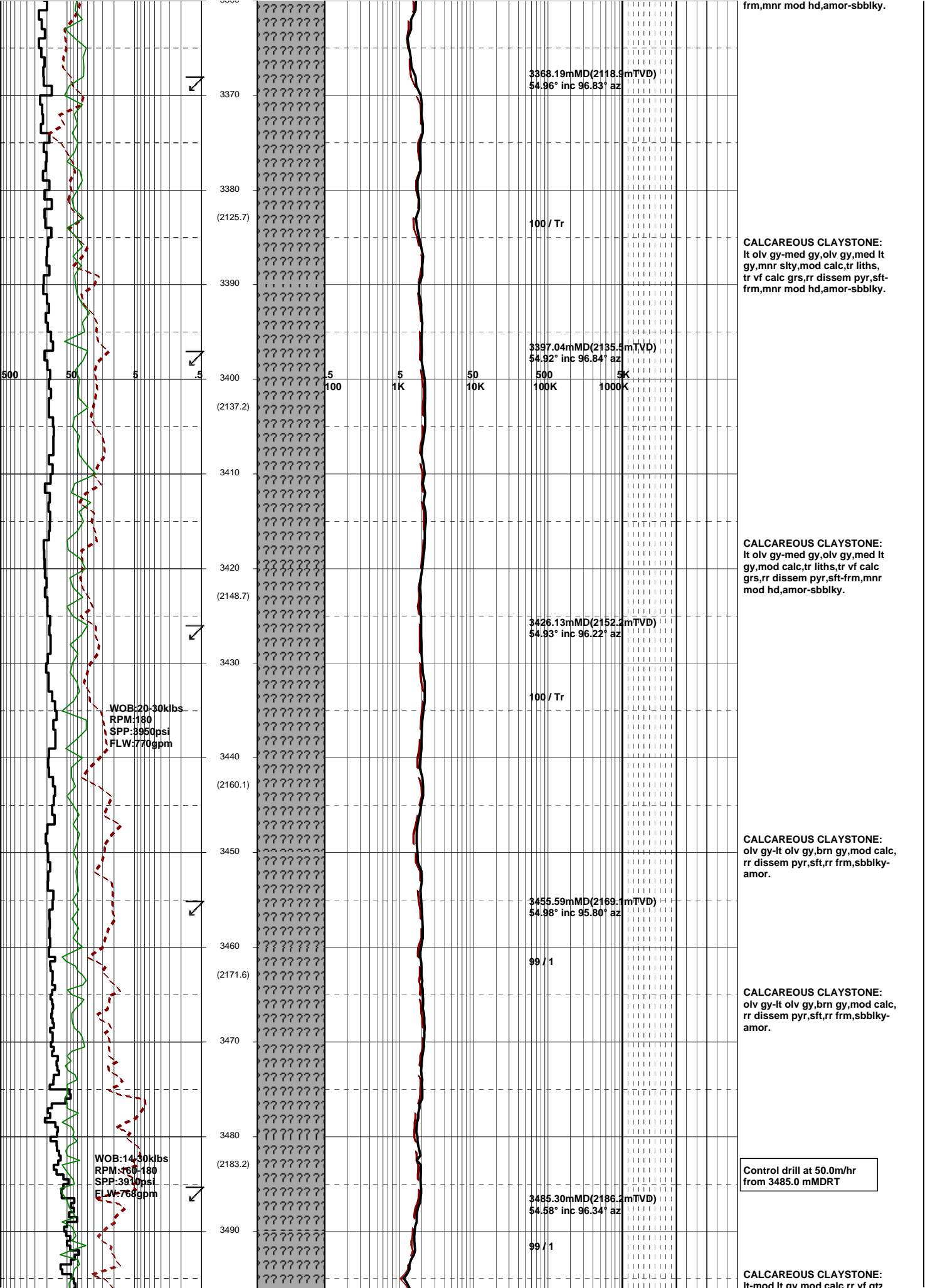
100 / Tr

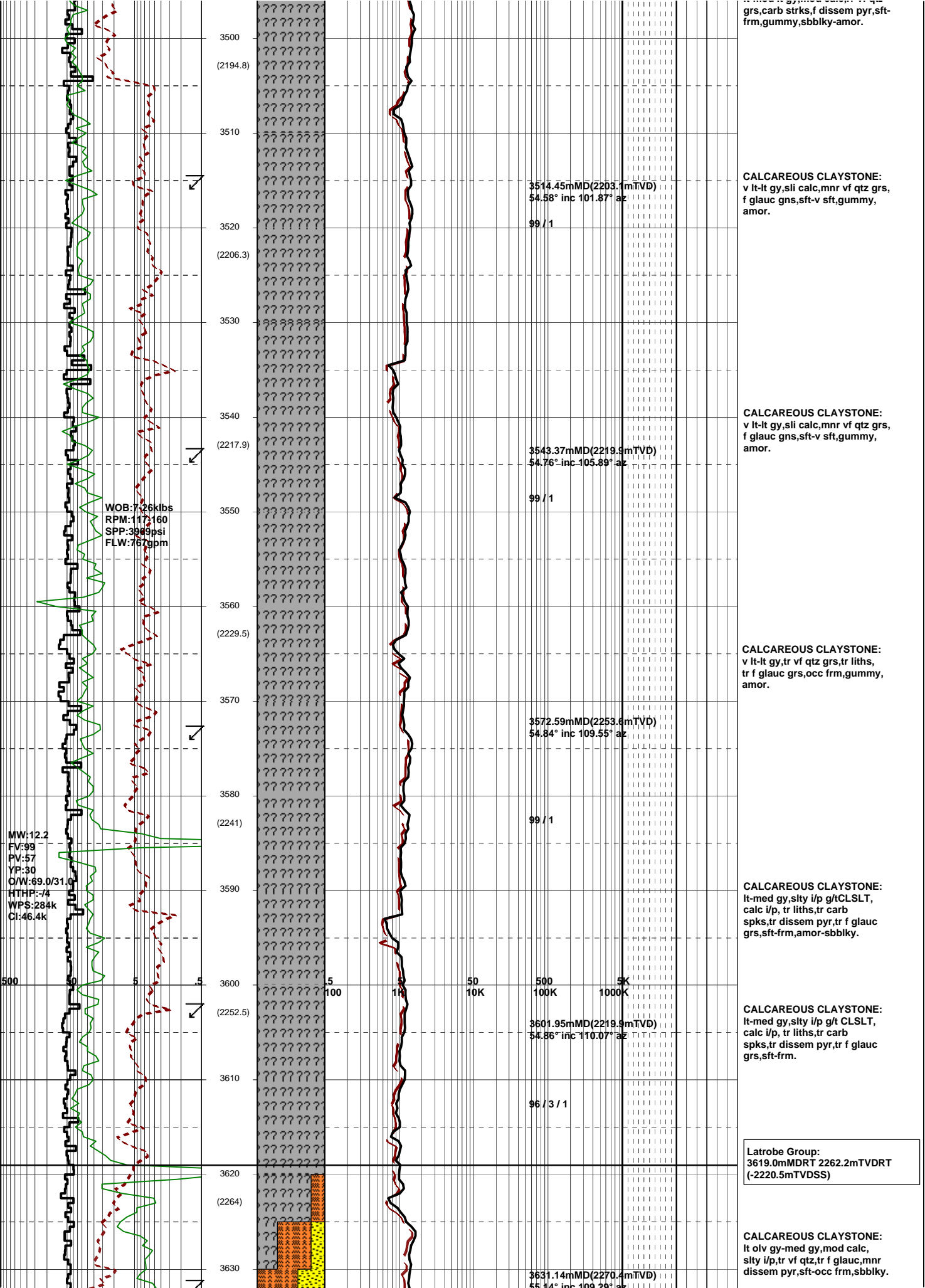
CALCAREOUS CLAYSTONE:
v lt gy-lt gy,med lt gy,mod calc,
tr liths,tr carb spks,sft-v sft,
amor.

3222.34mMD(2035.0mTVD)
55.08° inc 96.97° az

500 50 5 .5 100 5 50 500 5K 1000K







grs,carb strks,f disseminated pyr,sft-frm,gummy,sbbkly-amor.

CALCAREOUS CLAYSTONE:
v lt-lt gy,sli calc,mnr vf qtz grs,
f glauc gns,sft-v sft,gummy,
amor.

CALCAREOUS CLAYSTONE:
v lt-lt gy,sli calc,mnr vf qtz grs,
f glauc gns,sft-v sft,gummy,
amor.

CALCAREOUS CLAYSTONE:
v lt-lt gy,tr vf qtz grs,tr liths,
tr f glauc grs,occ frm,gummy,
amor.

CALCAREOUS CLAYSTONE:
lt-med gy,silty i/p g/t CLSLT,
calc i/p, tr liths,tr carb
spks,tr disseminated pyr,tr f glauc
grs,sft-frm,amor-sbbkly.

CALCAREOUS CLAYSTONE:
lt-med gy,silty i/p g/t CLSLT,
calc i/p, tr liths,tr carb
spks,tr disseminated pyr,tr f glauc
grs,sft-frm.

Latrobe Group:
3619.0mMDRT 2262.2mTVDRT
(-2220.5mTVDSS)

CALCAREOUS CLAYSTONE:
lt olv gy-med gy,mod calc,
silty i/p,tr vf qtz,tr f glauc,mnr
disseminated pyr,sft-occ frm,sbbkly.

3500
(2194.8)
3510
3520
(2206.3)
3530
3540
(2217.9)
3550
3560
(2229.5)
3570
3580
(2241)
3590
3600
(2252.5)
3610
3620
(2264)
3630

3514.45mMD(2203.1mTVD)
54.58° inc 101.87° az

99 / 1

3543.37mMD(2219.9mTVD)
54.76° inc 105.89° az

99 / 1

3572.59mMD(2253.6mTVD)
54.84° inc 109.55° az

99 / 1

3601.95mMD(2219.9mTVD)
54.86° inc 110.07° az

96 / 3 / 1

3631.14mMD(2270.4mTVD)
55.14° inc 109.29° az

WOB:7.26kbs
RPM:117.160
SPP:3989psi
FLW:767gpm

MW:12.2
FV:99
PV:57
YP:30
O/W:69.0/31.0
HTHP:-74
WPS:284k
CI:46.4k

500 5 5 50 500 5K
100 10K 100K 1000K

